

# LIGHTHOUSE

# POINT

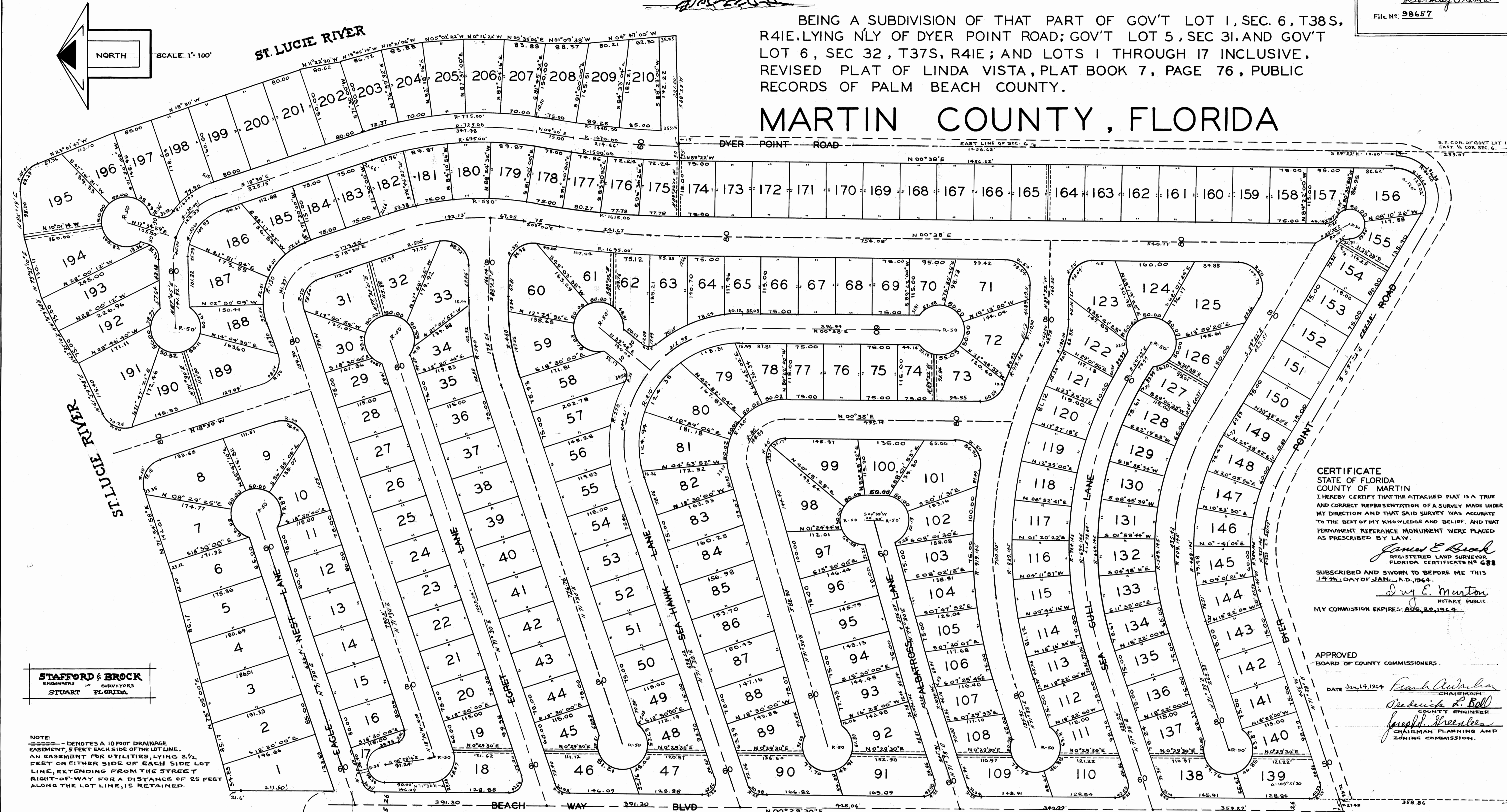


RECORDED  
IN MARTIN COUNTY, FLA.  
1964 JAN 31 PM 3:33

I HEREBY CERTIFY THAT I HAVE EXAMINED THE ATTACHED PLAT AND FIND THAT IT COMPLIES IN FORM WITH CHAPTER 177, FLORIDA STATUTES, AND WAS FILED FOR RECORD IN PLAT BOOK 7, PAGE 76, THIS 31st DAY OF JAN., A.D. 1964, IN THE OFFICE OF THE CLERK OF THE CIRCUIT COURT AT STUART, FLORIDA.  
CLERK OF THE CIRCUIT COURT  
*Dorothy Pierce*  
File No. 98657

BEING A SUBDIVISION OF THAT PART OF GOV'T LOT 1, SEC. 6, T38S, R41E, LYING NLY OF DYER POINT ROAD; GOV'T LOT 5, SEC 31, AND GOV'T LOT 6, SEC 32, T37S, R41E; AND LOTS 1 THROUGH 17 INCLUSIVE, REVISED PLAT OF LINDA VISTA, PLAT BOOK 7, PAGE 76, PUBLIC RECORDS OF PALM BEACH COUNTY.

## MARTIN COUNTY, FLORIDA



**STAFFORD & BROCK**  
ENGINEERS SURVEYORS  
STUART, FLORIDA

NOTE:  
----- DENOTES A 10 FOOT DRAINAGE EASEMENT, 3 FEET EACH SIDE OF THE LOT LINE. AN EASEMENT FOR UTILITIES, LYING 2 1/2 FEET ON EITHER SIDE OF EACH SIDE LOT LINE, EXTENDING FROM THE STREET RIGHT-OF-WAY FOR A DISTANCE OF 25 FEET ALONG THE LOT LINE, IS RETAINED.

CERTIFICATE  
STATE OF FLORIDA  
COUNTY OF MARTIN  
I HEREBY CERTIFY THAT THE ATTACHED PLAT IS A TRUE AND CORRECT REPRESENTATION OF A SURVEY MADE UNDER MY DIRECTION AND THAT SAID SURVEY WAS ACCURATE TO THE BEST OF MY KNOWLEDGE AND BELIEF, AND THAT PERMANENT REFERENCE MONUMENTS WERE PLACED AS PRESCRIBED BY LAW.  
*James E. Brock*  
REGISTERED LAND SURVEYOR  
FLORIDA CERTIFICATE NO. 688  
SUBSCRIBED AND SWORN TO BEFORE ME THIS 14th DAY OF JAN., A.D. 1964.  
*Dwight E. Munton*  
NOTARY PUBLIC  
MY COMMISSION EXPIRES: AUG. 20, 1969.

APPROVED  
BOARD OF COUNTY COMMISSIONERS.  
DATE Jan 14, 1964  
*Frank A. ...*  
CHAIRMAN  
*Frederick R. ...*  
COUNTY ENGINEER  
*Joseph ...*  
CHAIRMAN PLANNING AND ZONING COMMISSION.

DEDICATION  
STATE OF FLORIDA  
COUNTY OF MARTIN  
KNOW ALL MEN BY THESE PRESENTS THAT LIGHTHOUSE POINT INC., A CORPORATION ORGANIZED AND EXISTING UNDER THE LAWS OF THE STATE OF FLORIDA, HAS CAUSED THE ATTACHED PLAT TO BE MADE AND THE LAND SUBDIVIDED AS SHOWN HEREON AND DOES HEREBY AFFIRM THAT SAID CORPORATION IS THE OWNER OF THE LAND DESCRIBED UNDER THE ABOVE TITLE CAPTION, AND DOES HEREBY DEDICATE TO THE PERPETUAL USE OF THE PUBLIC THE ROADS AND DRAINAGE EASEMENTS SHOWN HEREON.  
I WITNESS WHEREOF LIGHTHOUSE POINT INC., HAS CAUSED THESE PRESENTS TO BE SIGNED BY ITS PRESIDENT AND ITS CORPORATE SEAL TO BE AFFIXED AND ATTESTED BY ITS SECRETARY THIS 14th DAY OF JAN., A.D. 1964.  
LIGHTHOUSE POINT, INC.  
*R.V. Johnson*  
PRESIDENT  
*W.P. Scott*  
SECRETARY

ACKNOWLEDGEMENT  
STATE OF FLORIDA  
COUNTY OF MARTIN  
BEFORE ME THIS DAY PERSONALLY APPEARED R.V. JOHNSON AND W.R. SCOTT, PRESIDENT AND SECRETARY RESPECTIVELY OF LIGHTHOUSE POINT INC., A CORPORATION, AND ACKNOWLEDGED TO AND BEFORE ME THAT THEY EXECUTED THE DEDICATION SHOWN HEREON FOR THE USES AND PURPOSES STATED THEREIN, ON BEHALF OF SAID CORPORATION.  
WITNESS MY HAND AND OFFICIAL SEAL AT Stuart, Fla. THIS 14th DAY OF JAN., A.D. 1964.  
*Dwight E. Munton*  
NOTARY PUBLIC  
MY COMMISSION EXPIRES: AUG. 20, 1969.

MORTGAGEE  
STATE OF FLORIDA  
COUNTY OF MARTIN  
KNOW ALL MEN BY THESE PRESENTS THAT THIRTEENJEM INC., A CORPORATION ORGANIZED AND EXISTING UNDER THE LAWS OF THE STATE OF FLORIDA, DOES HEREBY JOIN IN, AS MORTGAGEE, THE DEDICATION OF PLAT SHOWN HEREON FOR THE USES AND PURPOSES STATED THEREIN.  
IN WITNESS WHEREOF THIRTEENJEM, INC. HAS CAUSED THESE PRESENTS TO BE SIGNED BY ITS PRESIDENT AND ITS CORPORATE SEAL TO BE AFFIXED ON THIS 14th DAY OF JAN., A.D. 1964.  
THIRTEENJEM, INC.  
*R.V. Johnson*  
VICE-PRESIDENT

ACKNOWLEDGEMENT  
STATE OF FLORIDA  
COUNTY OF MARTIN  
BEFORE ME THIS DAY PERSONALLY APPEARED R.V. JOHNSON, VICE PRESIDENT OF THIRTEENJEM INC., A CORPORATION, AND ACKNOWLEDGED TO AND BEFORE ME THAT HE EXECUTED THE JOINT DEDICATION OF PLAT AS SHOWN HEREON, FOR THE USES PURPOSES STATED THEREIN, ON BEHALF OF SAID CORPORATION.  
WITNESS MY HAND AND OFFICIAL SEAL AT Stuart, Fla. THIS 14th DAY OF JAN., A.D. 1964.  
*Dwight E. Munton*  
NOTARY PUBLIC  
MY COMMISSION EXPIRES: AUG. 20, 1969.

